

# CERTIFICATE OF LOCATION OF GOVERNMENT CORNER

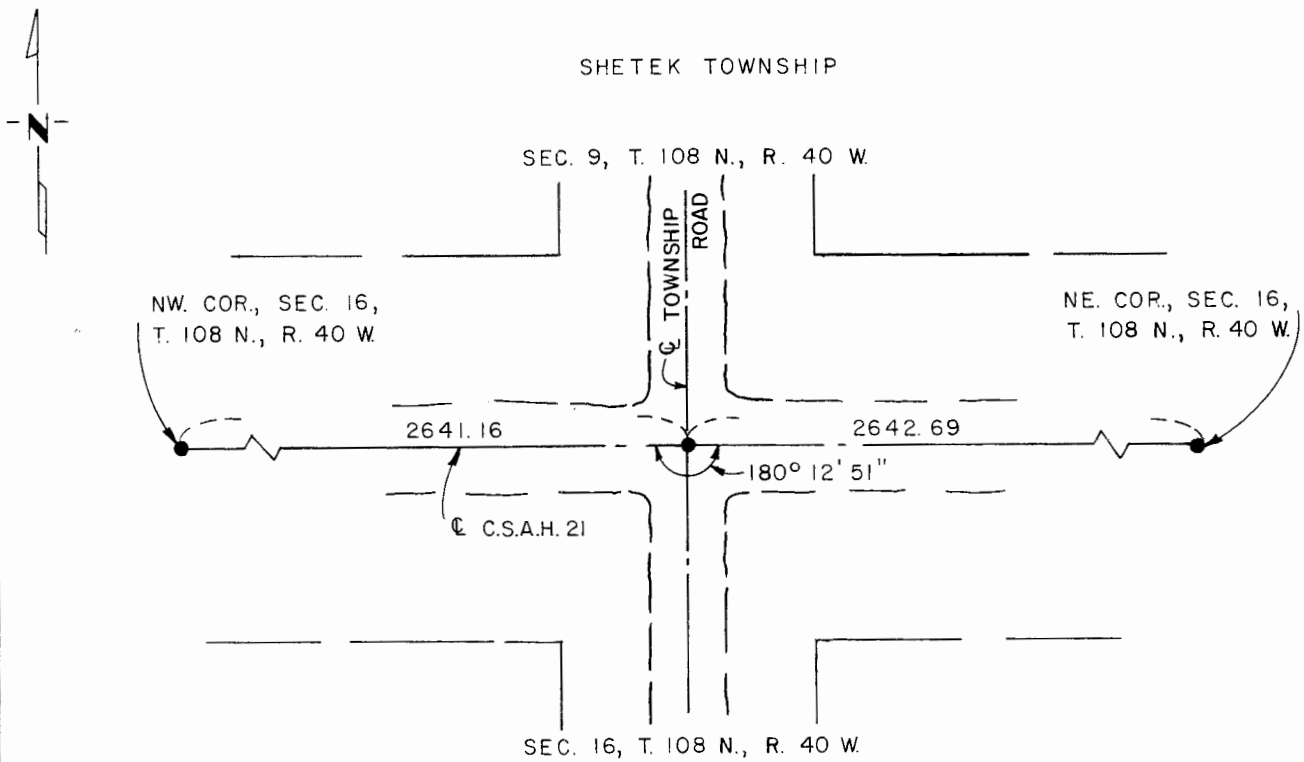
North Quarter Corner of Section 16, Township 108 N., Range 40 W., 5th P.M.

STATE OF MINNESOTA, County of Murray

At the corner location shown on the sketch:

- On Aug. 27, 1980 found a 1/2" square twisted iron bar per Co. records; iron bar  
DATE  
is on the C intersection of C.S.A.H.21 & Twmsp. Rd.
  - left monument as found,  lowered monument,  removed monument (explain)
- On \_\_\_\_\_ placed a \_\_\_\_\_  
DATE

## SKETCH OF REFERENCE TIES



I hereby certify that this document and the data contained herein was prepared by me or under my direct supervision.

Ray D. Stat  
SIGNATURE 12/23/81  
DATE

Registration No. 12967

- Land Surveyor,  Professional Engineer
- County Surveyor,  County Engineer

## OFFICE OF THE COUNTY RECORDER

County of MURRAY

I hereby certify that this document was filed in the Co. Recorders office at 10 A.M. on the 18th day of February A.D. 19 82

County Recorder Willard W. Ohme

By \_\_\_\_\_, Deputy

DOCUMENT NO. \_\_\_\_\_